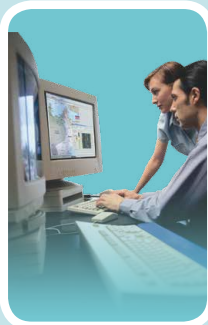
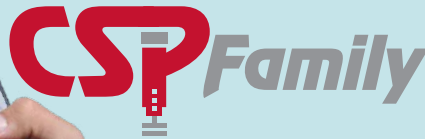


Probe-to-Host Instrument Compatibility Guide

NUCLEAR MEASUREMENT SOLUTIONS FOR SAFETY, SECURITY & THE ENVIRONMENT



→ Probe-to-Host Instrument Compatibility Guide

This guide provides the data you need to quickly configure your initial purchase of CSP/CSP compatible instruments, or to expand your family to include additional CSP host instruments and probes. It features key measurement and performance data for each probe, as well as probe to host instrument setup, calibration and firmware requirements.

Use this guide to put CSP to work for you- and reduce training and ownership costs while maximizing your operational efficiency!

 SABG-15+ GM Pancake Multi-purpose 15 cm ² contamination probe α β γ	 SPAB-15 PIPS Detector Alpha-beta discrimination in high gamma background (15 cm ²) α β	 SA-20-2 and SA-32 ZnS Scintillator 20 cm ² - 32 cm ² Small area alpha contamination check in high gamma or neutron background α	 SB-20 Plastic Scintillator 20 cm ² beta contamination check in high gamma background β	 SA-100 ZnS Scintillator 100 cm ² Large area alpha contamination check α	 SB-100 Plastic Scintillator 100 cm ² Large area beta contamination check β	 SAB(G)-100 Plastic/Zn-S Phoswich 100 cm ² Alpha/beta discrimination on large contamination area & personal frisking α β	 SG-1R NaI(Tl) Scintillator 1" x 1" Low dose-rate and gamma contamination probe γ
---	---	---	--	--	---	--	--

	Measurement Type	Count-rate and isotope activity equivalent							
CSPS Capabilities	Calibration	HV plateau	No	HV plateau		HV plateau – α/β crosstalk	HV plateau		
	Setup	Activity coefficient – Alarm setpoints					Low energy di	Alarm s	
	Data-logging transfer	Yes							
	Acquisition								
	PC cable	EM78466							
	CSP-COM	No							
Radiagem X000	1.5 meter straight cable	EM77336							
	0.7-1.5 meter coil cable	EM77337							
	10 meter cable with ferrite	EM85920							
	20 meter cable with ferrite	EM80653							
	Minimum Firmware version	Vx.22 (Vx.23 should be installed)	<Vx.20						
	Data-logging control CSP-COM						Yes in probe memory	No	
Colibri	1.5 meter cable	EM77336							
	0.7-1.5 meter coil cable	EM77337							
	10 meter cable with ferrite	EM85920							
	20 meter cable with ferrite	EM80653							
	Minimum Firmware version	V2.2							
	Data-logging control CSP-COM-BT						Yes in Probe and Colibri memory	Yes	
AVIOR/MIP-10D	1.5 meter cable	EM77336							
	0.7-1.5 meter coil cable	EM77337							
	10 meter cable with ferrite	EM85920							
	20 meter cable with ferrite	EM80653							
	Minimum Firmware version	V1.08	V1.07						
	Data-logging control CSP-COM						No – Time integration only	No	
Application Software	PC cable	EM78466							
	CSP-PL compatibility CSP-COM-BT CSP-COM-WiFi CSP-COM-Ethernet CSP-COM-RS485	Yes. Acquisition and unit selection							
	CSP-COM-RF	Acquisition only							

SG-2R NaI(Tl) Scintillator 2" x 2"		SX-2R NaI(Tl) Scintillator 1.5" x 3mm		Dongle-AB For Conventional alpha/beta probes		SN-S Moderated Helium 3 Tube		SVLD Energy Compensated CsI(Tl)		STTC Energy compensated G-M Detector		TELE-STTC Energy Compensated G-M Detector		PNK-R Pancake dongle		STHF-R Silicon Pin diode							
Very low dose-rate and gamma contamination probe		Low energy gamma and alpha contamination check in humid environment		Alpha and beta contamination discrimination		Neutron presence detection		Very low H*(10) dose equivalent rate probe for public working area checks		Wide range H*(10) dose rate equivalent to ICRP-60		Wide range H*(10) dose rate equivalent to ICRP-60 with telescopic pole		Adapt existing competitive pancake probes. Not fully CSP		Very high range H*(10) ICRP-60 dose equivalent. Not fully CSP							
γ		α, X, γ		α β		η		γ		γ		γ		α β γ		γ							
Count-rate				H*(10) Dose				H*(10) Dose				Count-rate & isotope activity equivalent				H*(10) Dose							
Isotope dose equivalent				HV plateau – α/β crosstalk				HV plateau				Dose coefficient				No				Dose coefficient			
Discriminator – setpoints				Activity coefficient – Alarm setpoints				Alarm setpoints								Activity coefficient – Alarm setpoints				Alarm setpoints			
																No							
																Yes							
																EM80808 calib box				EM78466			
																No							
		Direct connection only				EM77336				In Pole		EM77336				50 meter cable included							
		Direct connection only				EM77337				In Pole		EM77337				50 meter cable included							
		Direct connection only				EM85920				In Pole		N/A				50 meter cable included							
		Direct connection only				EM80653				In Pole		N/A				50 meter cable included							
Vx.26		Vx.23		Vx.25		Vx.22 (Vx.23 should be installed)										<Vx.20							
																No							
		Direct connection only				EM77336				In Pole		EM77336				Not compatible							
		Direct connection only				EM77337				In Pole		EM77337				Not compatible							
		Direct connection only				EM85920				In Pole		N/A				Not compatible							
		Direct connection only				EM80653				In Pole		N/A				Not compatible							
V2.7		V2.2		V2.6		V2.2										Yes in Colibri memory only							
																N/A				No			
		Direct connection only				EM77336				N/A		EM77336				50 meter cable included							
		Direct connection only				EM77337				N/A		EM77337				50 meter cable included							
		Direct connection only				EM85920				N/A		N/A				50 meter cable included							
		Direct connection only				EM80653				N/A		N/A				50 meter cable included							
V1.09		V1.08		V1.09		V1.08										V1.07							
																Yes Acquisition				No			



CANBERRA



Nuclear Measurements Business Unit — Nuclear Measurement Solutions for Safety, Security and the Environment

For more information please visit: www.canberra.com C40500 — 02/2017